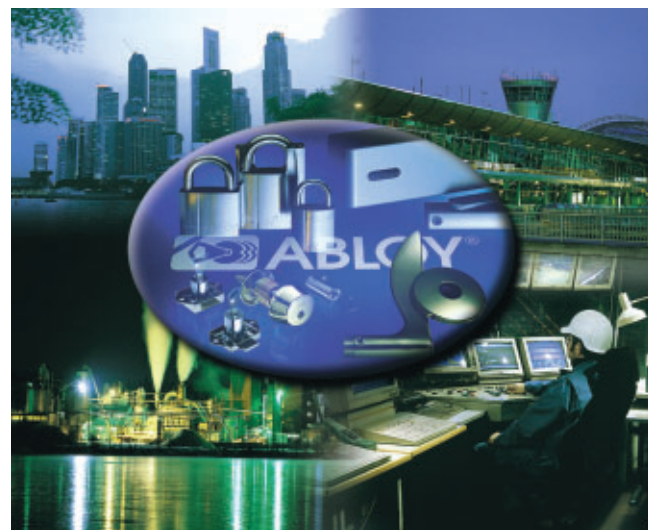


ABLOY® – the sign for security



The quality and environmental systems used by Abloy Oy guarantee that customers can be certain of ABLOY® quality in every field. We received our first Quality Systems Certificate - SFS EN ISO 9001 - in 1989. Just eight years later, Abloy Oy was one of the first companies in Finland to be granted an SFS-EN-ISO 14001 Environmental Systems Certificate.

Our products are designed and manufactured not only to provide high levels of security, but also to be reliable, user-friendly and aesthetically pleasing. ABLOY® is your sign for security.



ABLOY® is a registered trademark of Abloy Oy, one of the leading manufacturers of locks, locking systems and architectural hardware and the world's leading developer of products in the field of electromechanical lock technology.

The unique ABLOY® detainer disc cylinder mechanism has several advantages over conventional locking mechanisms. Ever since its invention in 1907, it has been a symbol of high security and superior performance.

Our range consists of electromechanical locks, cam locks, padlocks, office furniture locks, rim locks, lock cases, cylinders for different types of mortice locks, door closers, door automatics and architectural hardware. ABLOY® locking solutions for every application are available from our world-wide network of distributors.

Customer-oriented development, combined with our long experience and extensive security expertise, mean that ABLOY® security solutions employ the very latest technology to meet your needs.

ABLOY® EL554 FAST SCANDINAVIAN RANGE MOTOR LOCK FOR WOODEN DOORS

High security with immediate access



Abloy Oy
Wahlforssinkatu 20
P.O. Box 108
FIN-80101 JOENSUU
FINLAND
Tel. +358 13 2501
Fax +358 13 250 2209



www.abloy.com

9312523 6/2003

TECHNICAL DETAILS

Operating voltage	12-24 VDC (+/-15%) 12-18 VAC (-10%/+15%, RMS)
Current	70 mA idle 200 mA motor drive 300 mA max.
- 12VDC	35 mA idle 100 mA motor drive 150 mA max.
- 24 VDC	
Adjustable delay	2...15 sec
Temperature range	-20°C...+60°C
Bolt throw	14 mm latch bolt 20 mm dead bolt
Backset	50 mm
Forend	22 mm
Spindle	8 mm

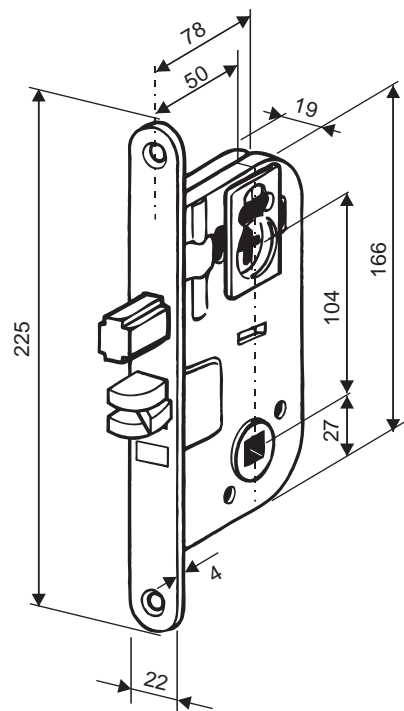
FINISH

Chrome-plated forend and lock body.

CYLINDERS

- Scandinavian oval and round cylinders; ABLOY® DISKLOCK PRO, ABLOY® PROTEC ASSA, RUKO; TrioVing or other.
- EL557 Finnish type; ABLOY® CLASSIC or ABLOY® DISKLOCK PRO.

DIMENSIONS



Lock case dimensions conform to SS 81 73 83.

FAST MOTOR LOCK ABLOY® EL554 WITH DEAD BOLT



ABLOY® EL544 is a fast motor lock with dead bolt and handle-operated mechanical anti-friction latch bolt for wooden and steel doors.

FEATURES

- fast opening, strong against seal forces
- configurable fail locked or fail unlocked in the case of power failure, requires a backup card in the control unit (available as an accessory)
- multivoltage AC/DC -operation
- break-in resistance according to Swedish standard class 3

APPLICATION

EL554 is a high security lock for exterior doors and emergency exits that are unlocked in day time and electrically locked in night time. Suitable applications are i.e. doors of commercial buildings, schools, universities and industrial premises.

The locks can be controlled by a variety of electrical impulse generating equipment, i.e. card reader, keypad or timer.

Also available:
EL555 with dead bolt only (used as auxiliary lock only)
EL557 - same as EL555 but with Finnish type cylinder

FUNCTION

EL554 includes two bolts; fast motorized dead bolt and handle-operated anti-friction latch bolt. The dead bolt is withdrawn and thrown by motor.

CONTROL SWITCH

Momentary: bolt is thrown automatically after an adjusted delay of 2...15 seconds.

Continuous: bolt is retained inside lock case as long as control circuit is closed.

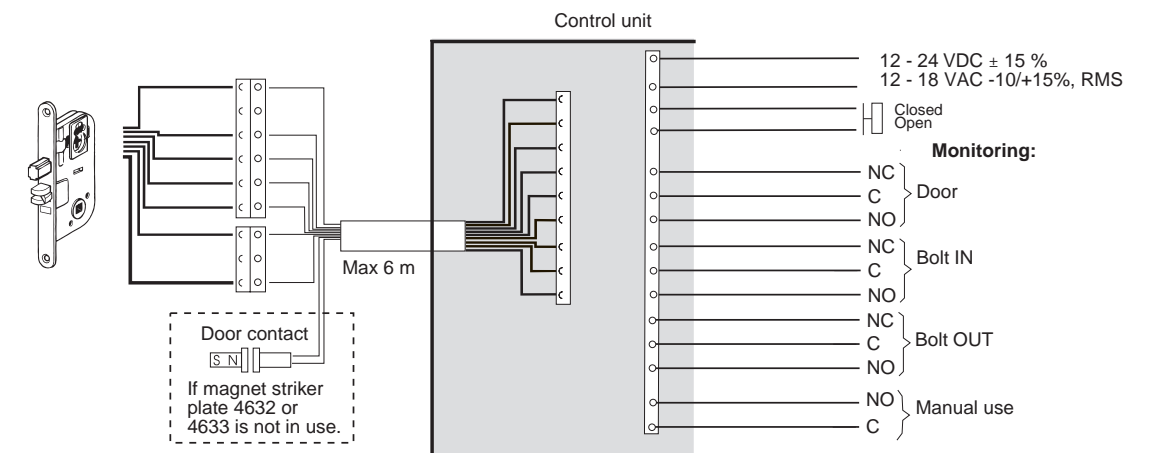
Lock case is equipped with an integral door contact, which prevents the bolt from being thrown before door is closed. Lock incorporates a control unit, which gives impulse for bolt to be thrown after delay or use of key. Lock is used with striker plate 4632 equipped with door contact.

MONITORING

- bolt in
- bolt out
- manual use
- door position

Note: The new ABLOY® EL554 replaces ABLOY® 8154 lock case. The new locks are not electrically compatible with 8154 control unit and lock cases.

WIRING DIAGRAM



COMPATIBILITY CHART FOR CYLINDERS, FITTINGS AND ACCESSORIES

	CYLINDERS AND FITTINGS	ACCESSORIES (Please order separately)			
	ABLOY DISKLOCK PRO (D), ABLOY PROTEC (N)	Strike	Cable	Lead cover	Backup card
	Cylinder/fittings	4632/4633	EA214	EA280/EA281	952169
Single w/ thumbturn	CY201D (SO)/- CY204D (SR)/6420				
Double	CY202D (SO)/- CY205D (SR)/6420				

*) SO= Scandinavian oval, SR = Scandinavian round